

TECHSTONE

quartz surfaces

www.techstonequartz.com

TECHSTONE

quartz surfaces

Techstone Quartz is a premier Indian manufacturer and global exporter of high-quality quartz stone slabs and pre-fabricated kitchen & vanity countertops.

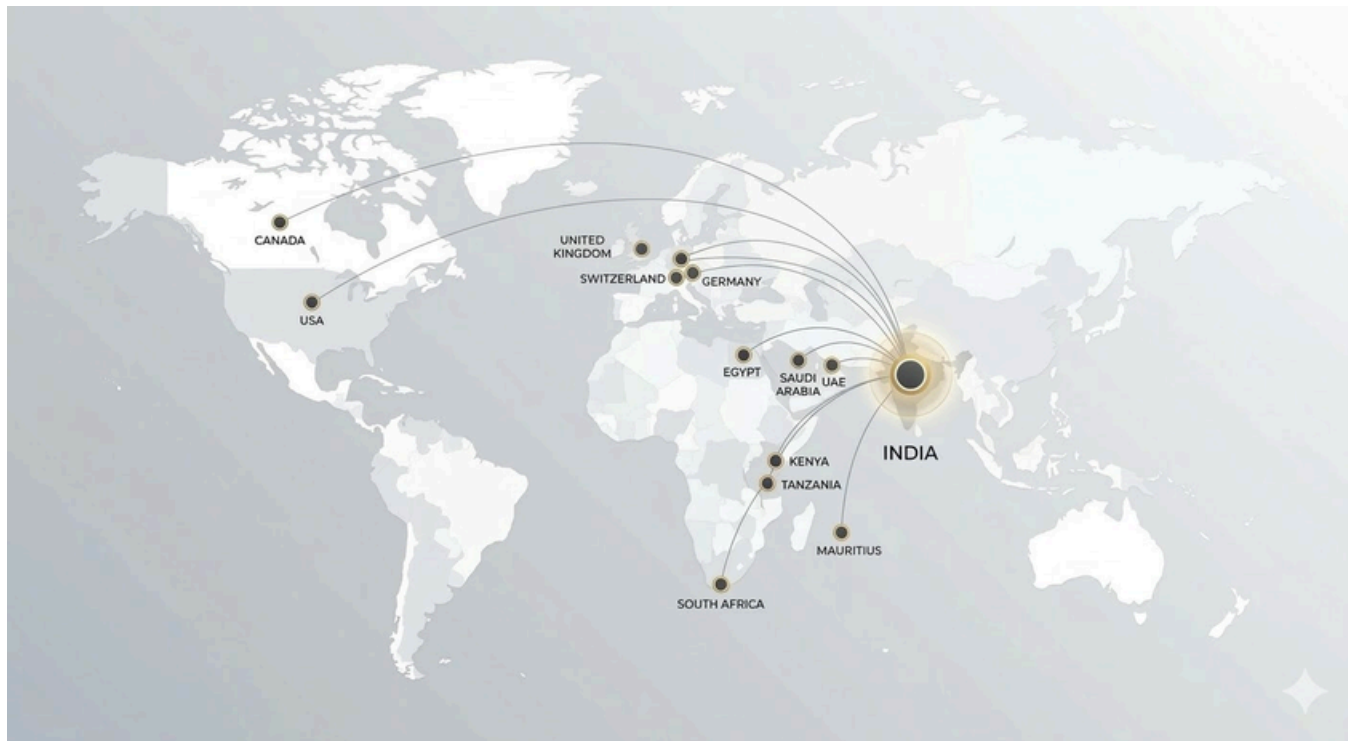
With over 9 years of expertise, we operate India's first fully integrated quartz slab and fabrication unit, ensuring complete in-house production and reliable bulk deliveries.

Serving clients across the USA, Europe, and Africa, we combine advanced technology with craftsmanship to offer diverse designs, durability, and premium finishes.

We specialize in large-scale projects including hotels, multifamily developments, and commercial contractors, delivering consistent quality for bulk requirements.



DISCOVER THE TECHSTONE ADVANTAGE



GLOBAL EXPORT NETWORK

Delivering premium quartz surfaces across international markets, we proudly serve clients worldwide with consistency, reliability, and excellence.

FULLY INTEGRATED MANUFACTURING

From raw material sourcing to finished countertops, our end-to-end production ensures complete quality control and unmatched efficiency.

RELIABLE GLOBAL SUPPLY

With strong logistics and export capabilities, we ensure timely delivery and seamless supply to every destination.

ADVANCED PRODUCTION TECHNOLOGY

Equipped with state-of-the-art machinery and automation, we manufacture precision-engineered quartz surfaces that meet global standards.

SUPERIOR QUALITY STANDARDS

Our quartz slabs are engineered for durability, strength, and long-lasting beauty, exceeding industry benchmarks.

DESIGN & SURFACE INNOVATION

Inspired by natural stone and modern trends, our designs combine aesthetics with performance to elevate every space.

COMPETITIVE VALUE ADVANTAGE

Our integrated operations allow us to offer premium quality at competitive pricing without compromise.

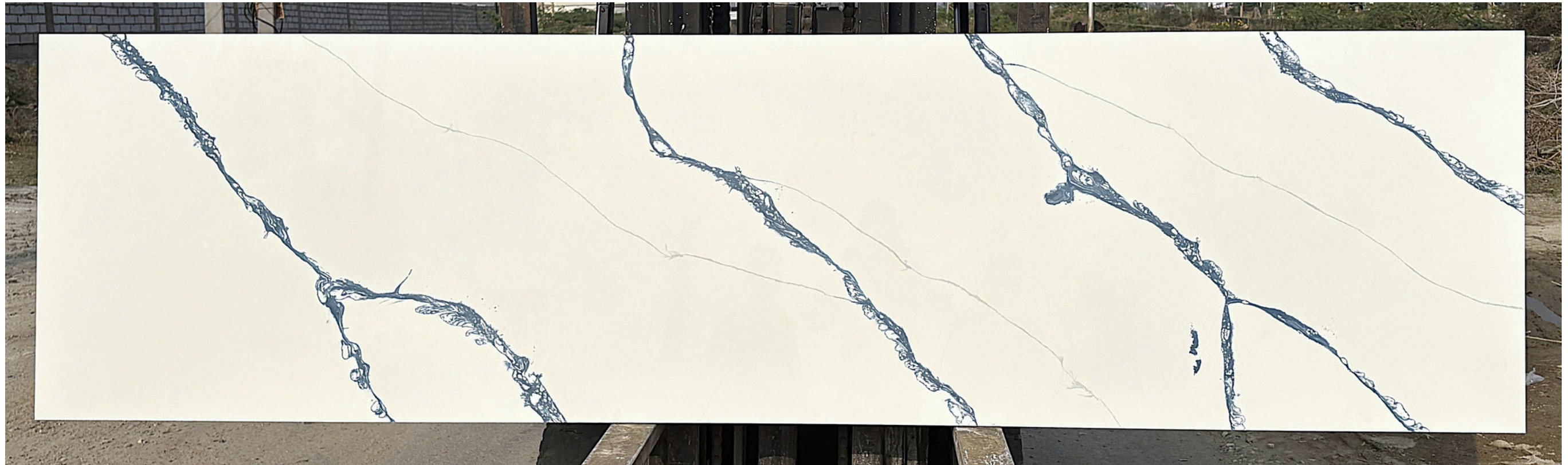
CLIENT-CENTRIC APPROACH

We focus on building long-term partnerships by delivering personalized solutions and exceptional service.

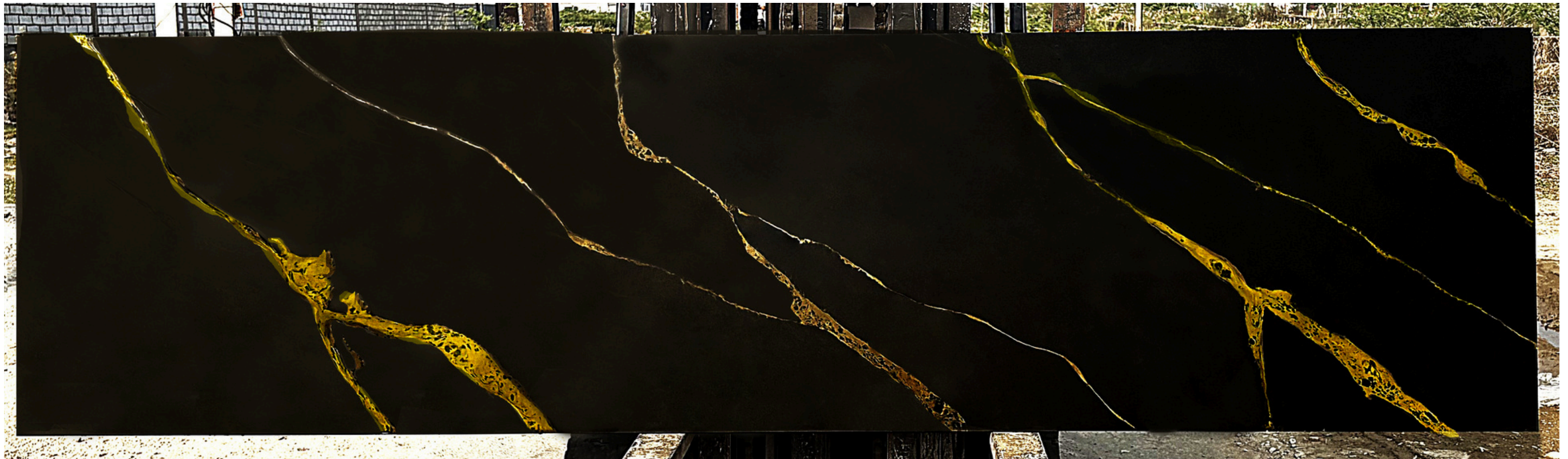
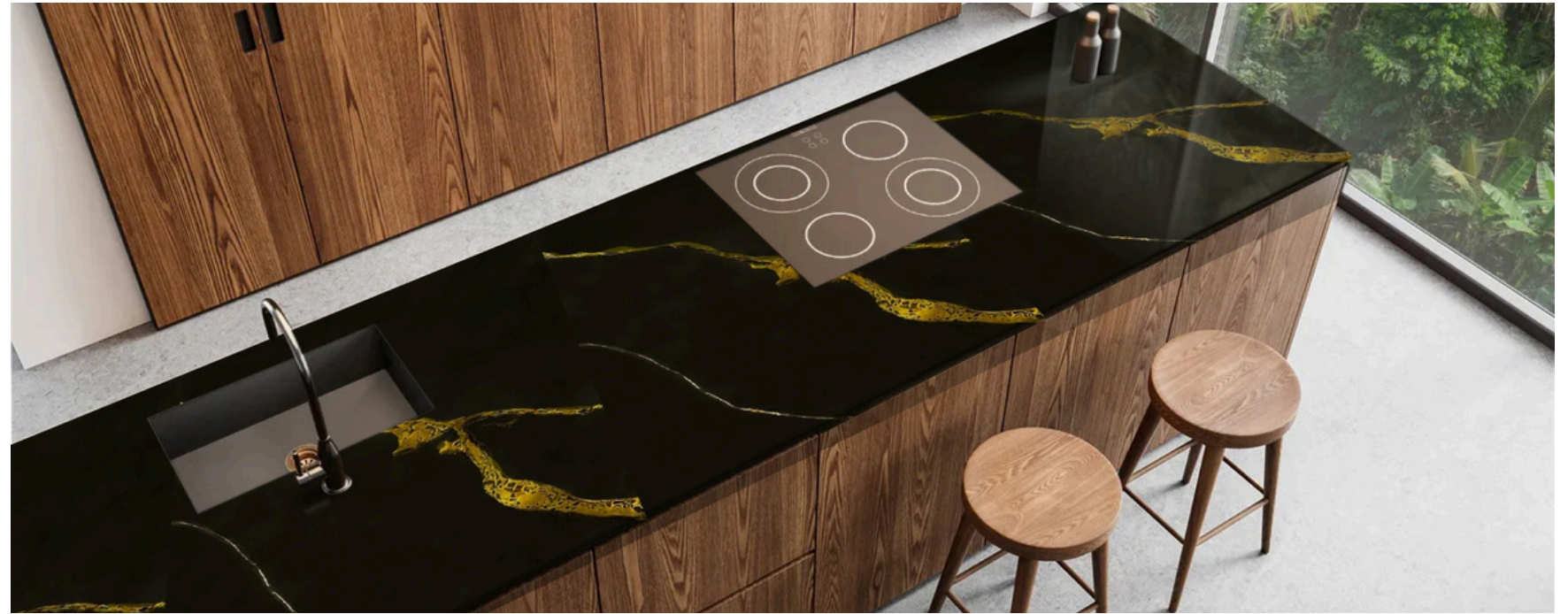
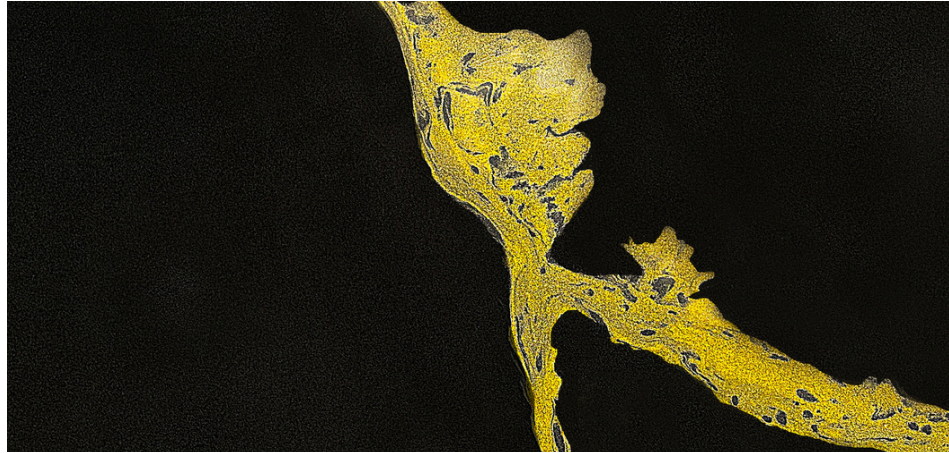
CALACATTA COLLECTION



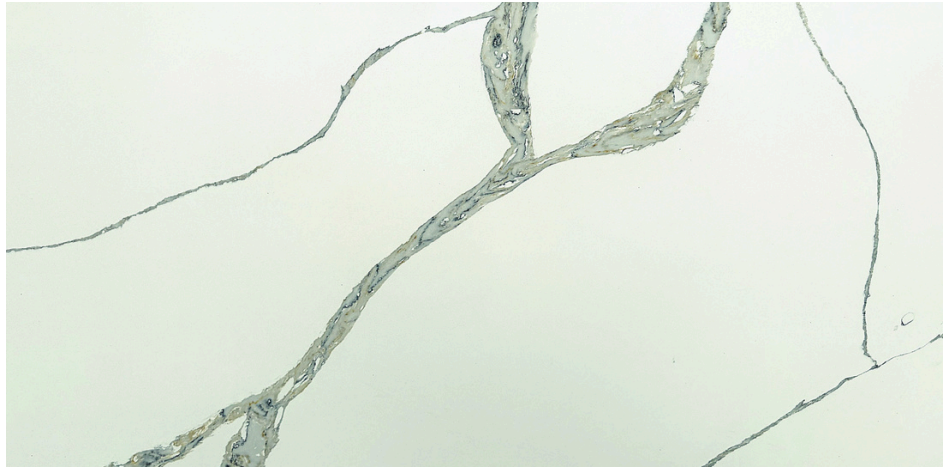
Calacatta Blue River



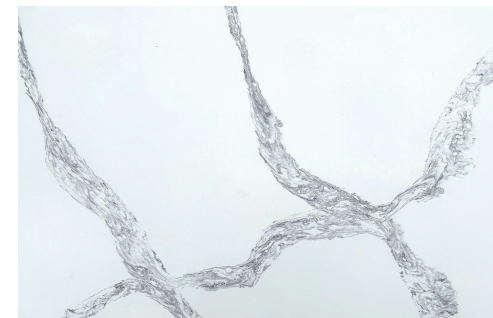
Calacatta Black Nova



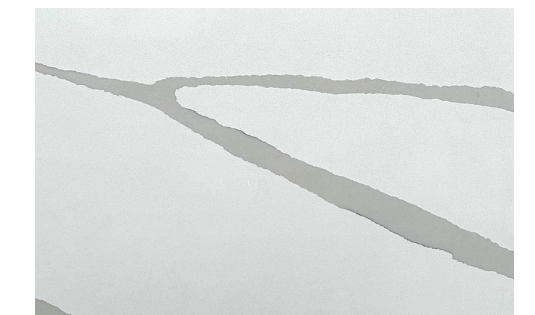
Calacatta Fossil



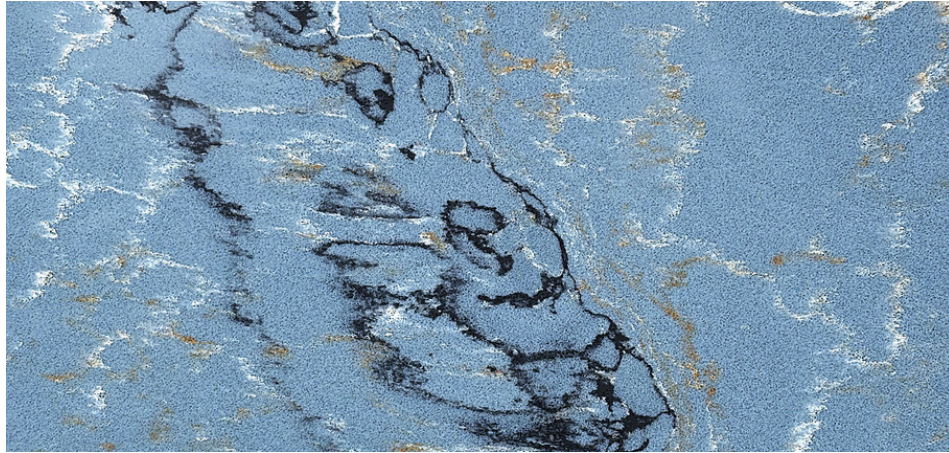
Calacatta Rustic



Calacatta Sterling White



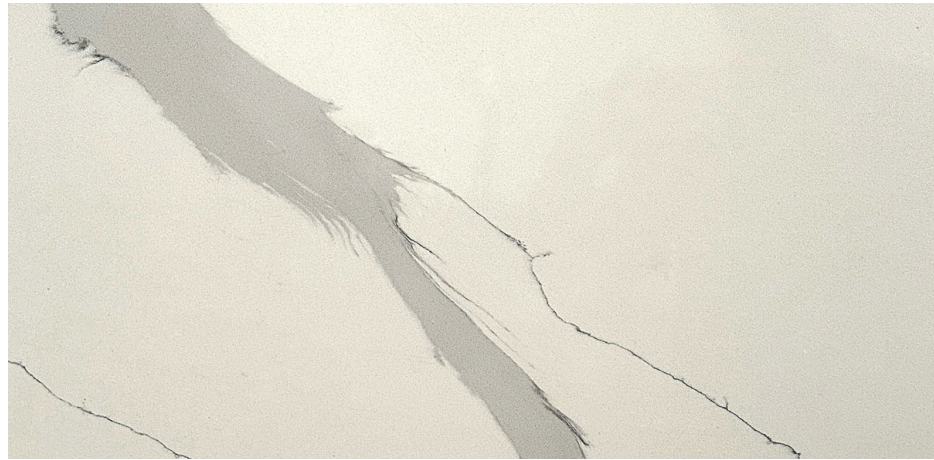
Calacatta Blue Aura



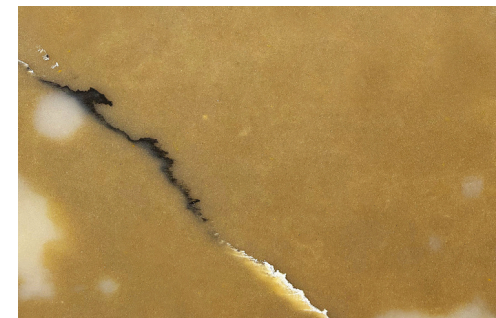
Calacatta Gold Azure



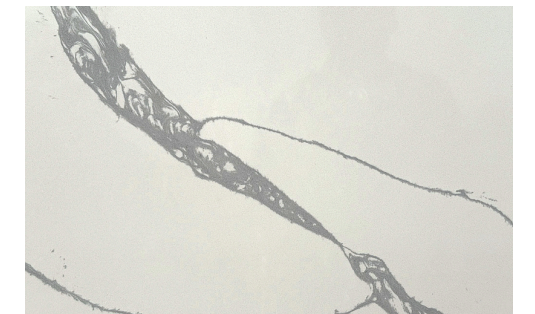
Calacatta Imperial



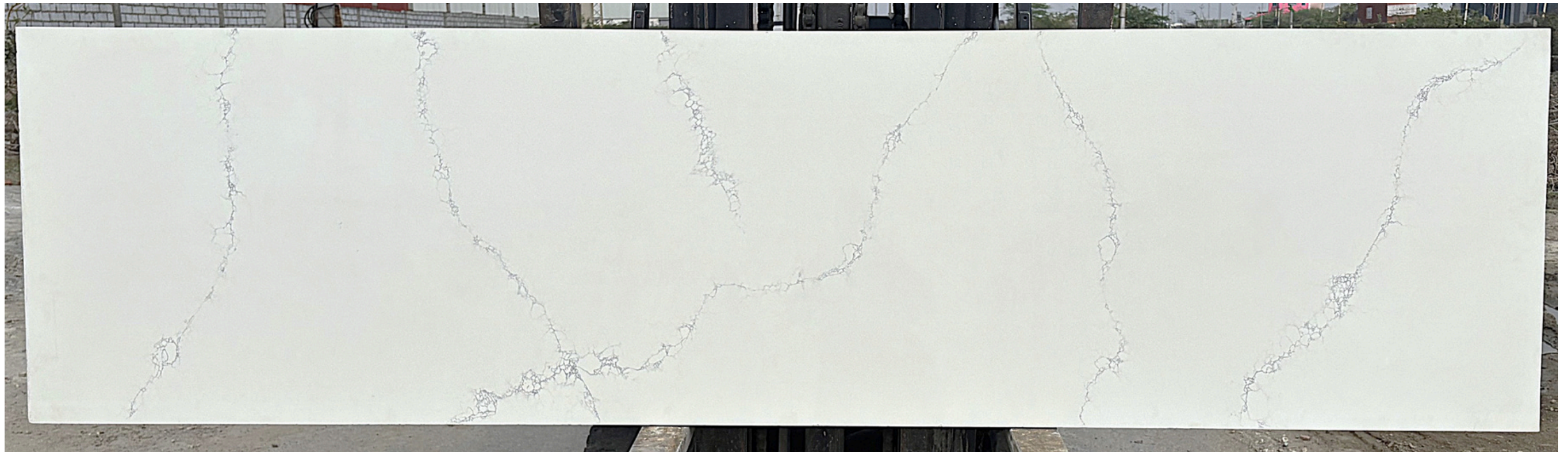
Calacatta Onyx Ocean



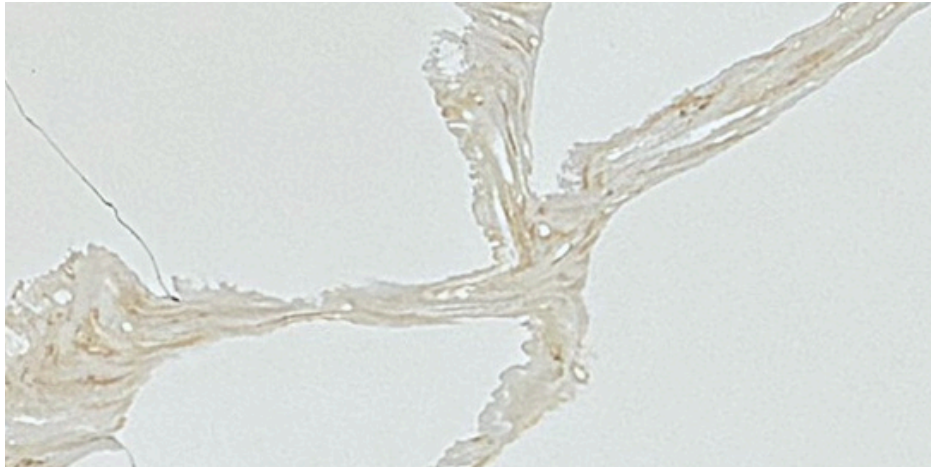
Calacatta Prestige



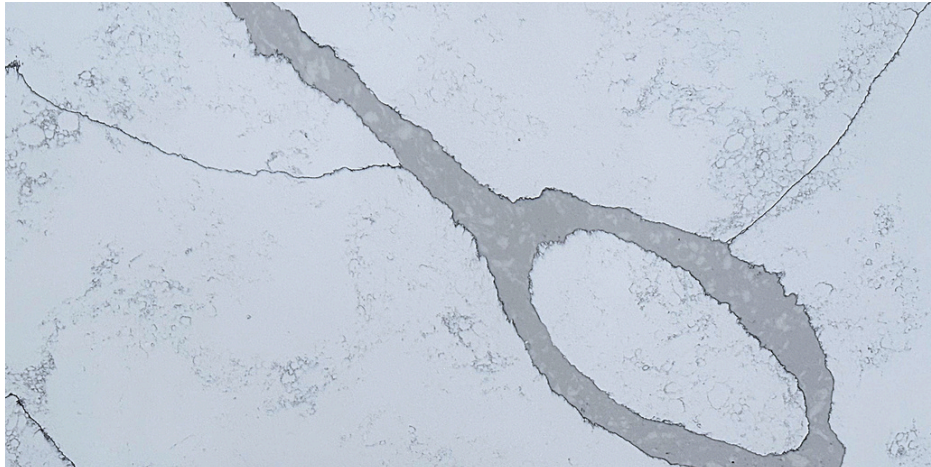
Calacatta Lluvia



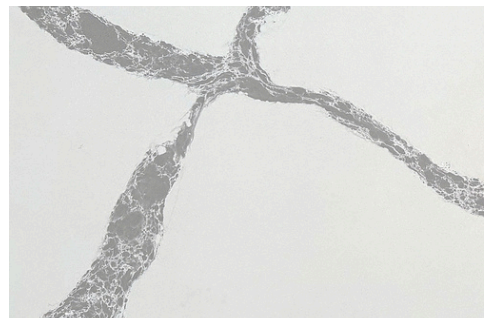
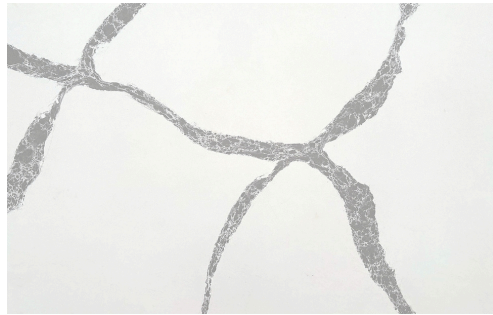
Calacatta Miracle



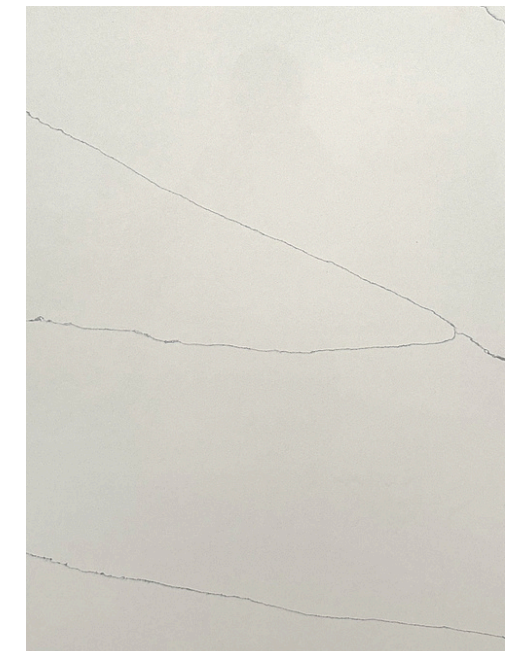
Calacatta Nova



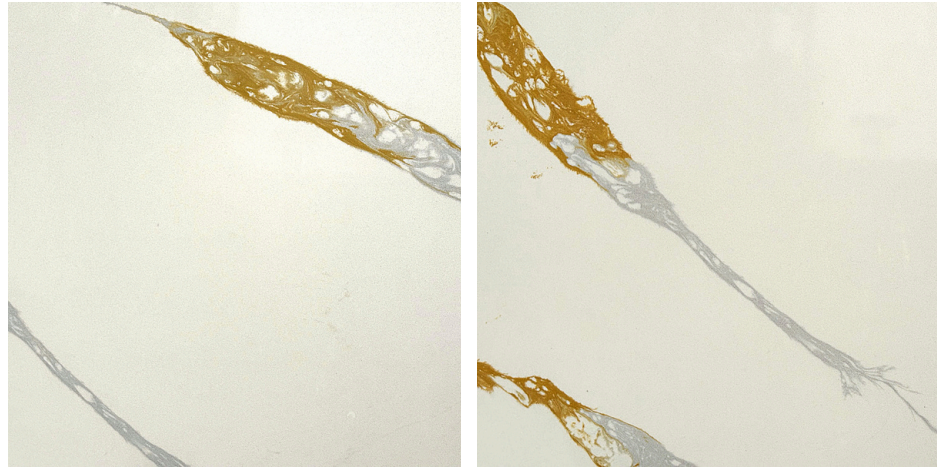
Calacatta Vivir



Calacatta White Alma



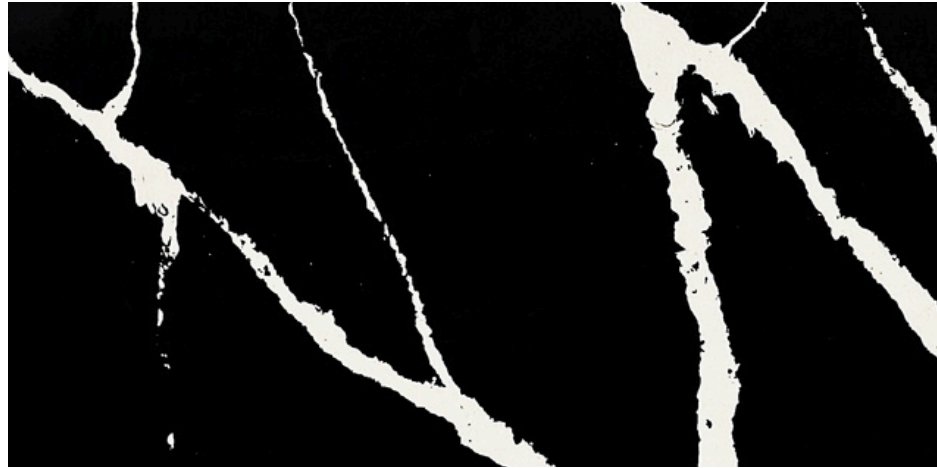
Calacatta Royal Gold



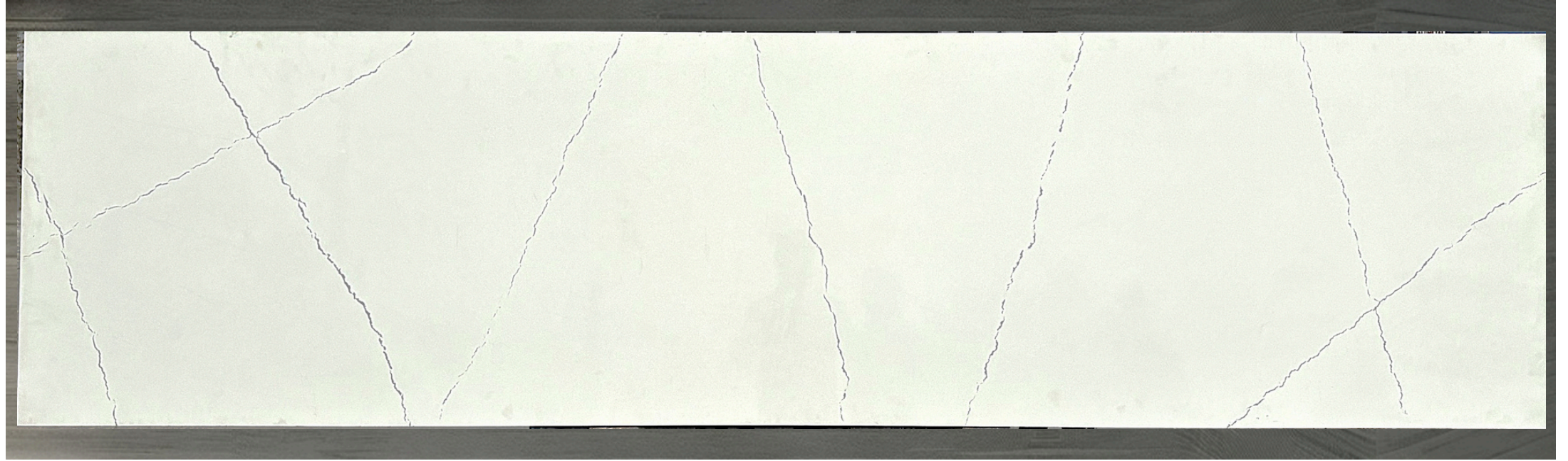
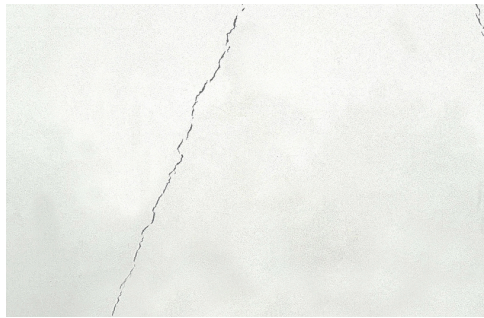
Calacatta Coral



Calcatta Vanetian Black



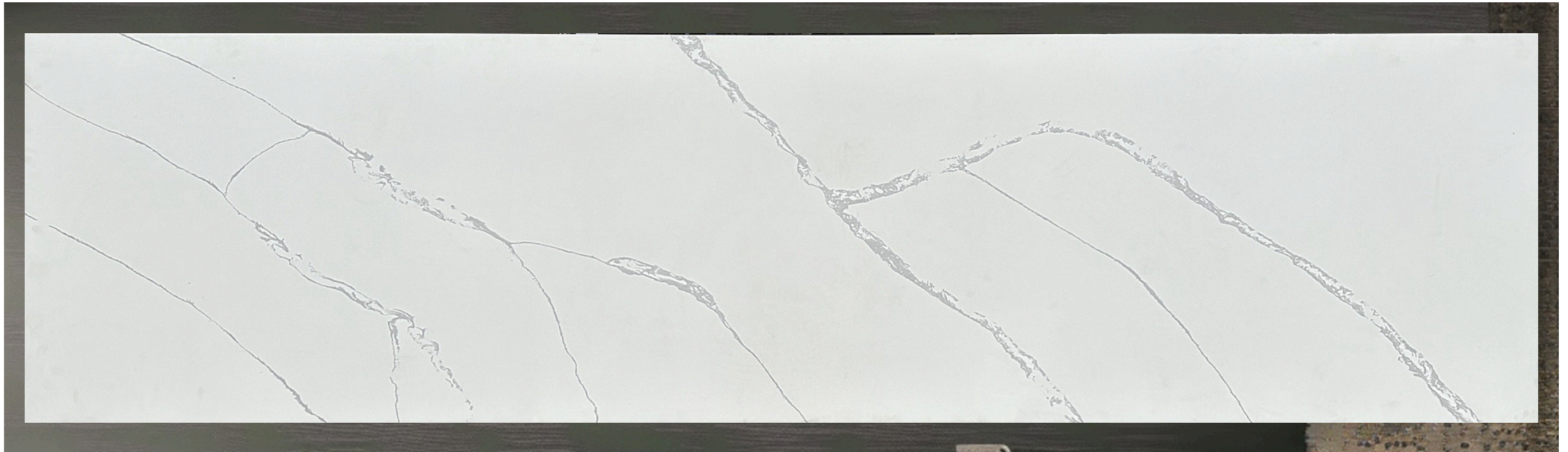
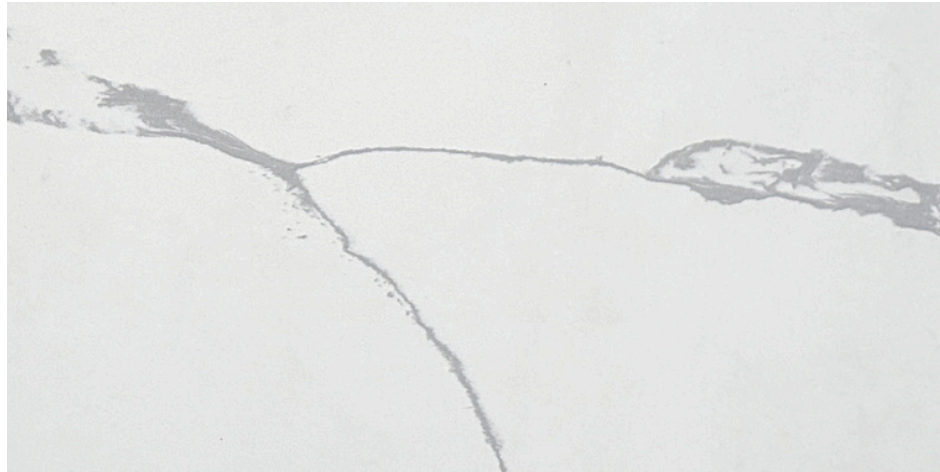
Calacatta Bueno



Calacatta Storm



Calacatta White Liquid Grey



CARRARA COLLECTION



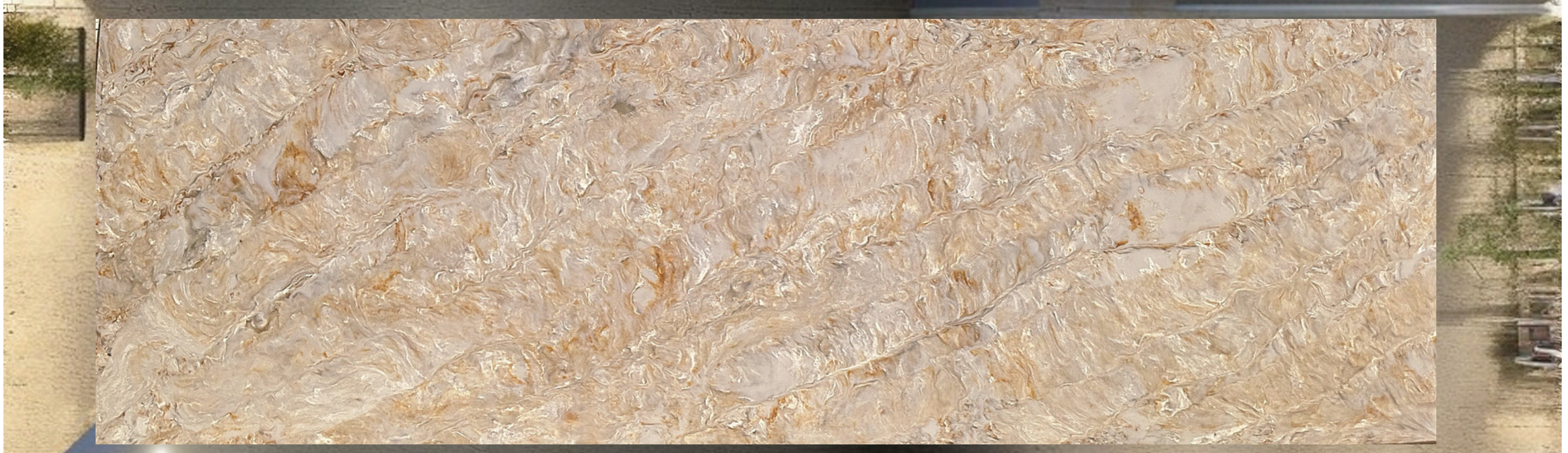
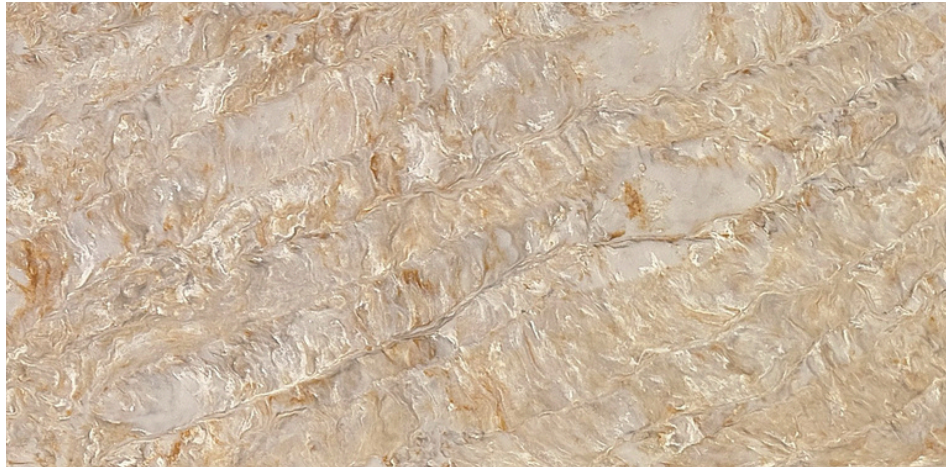
Carrara Silver Mist



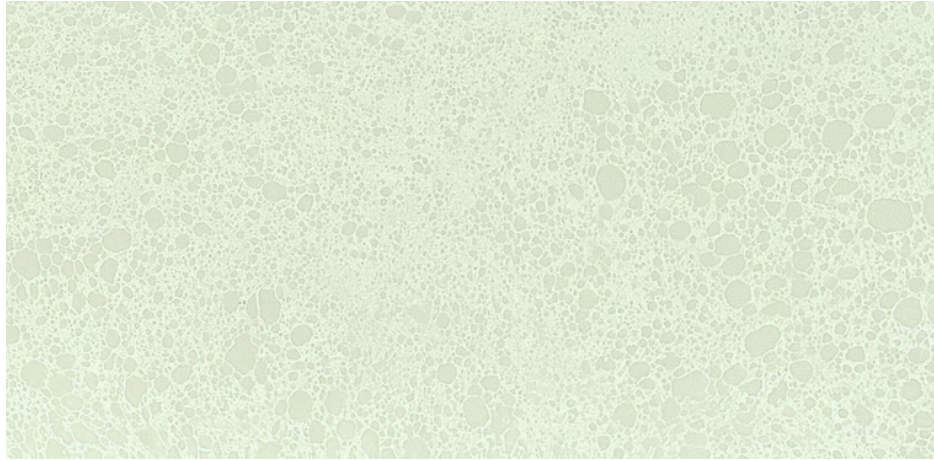
Carrara Sand Cloud



Taj Mahal



Carrara Venus



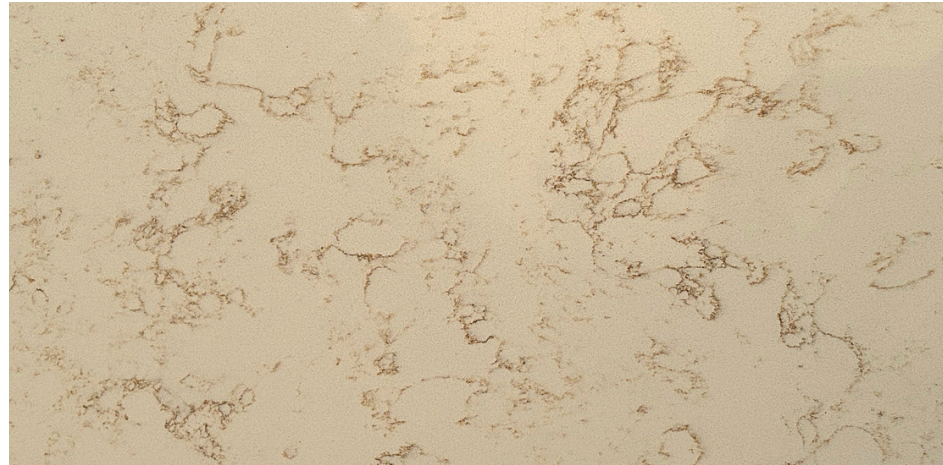
Carrara Grey Forest



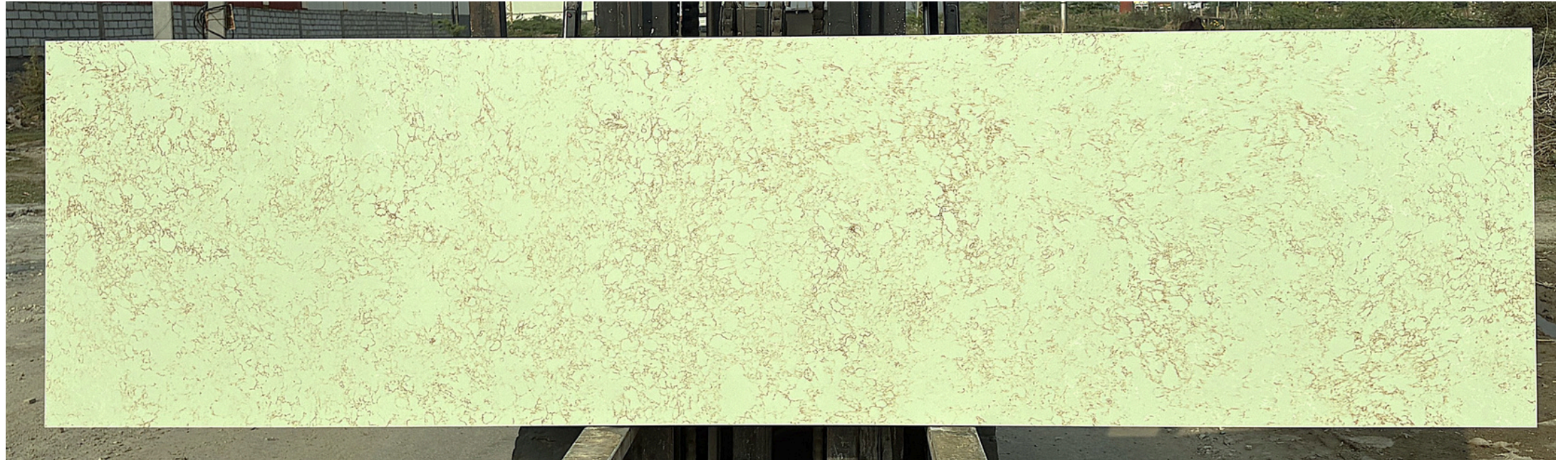
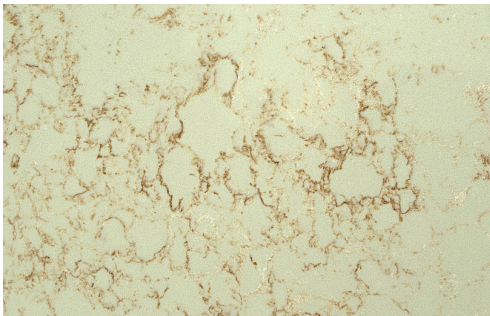
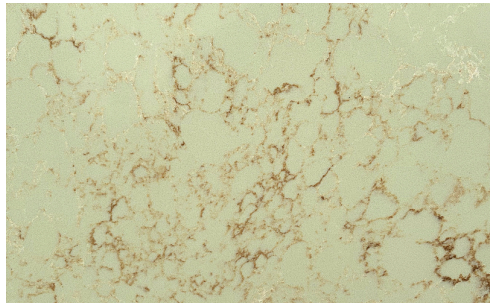
Carrara Multi Grey



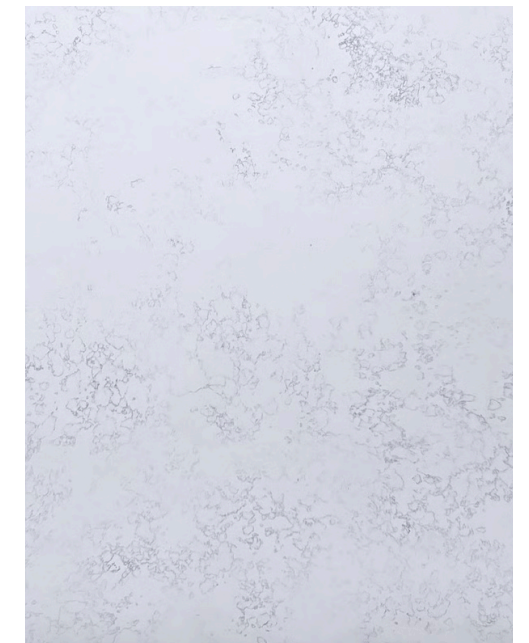
Carrara Beige



Carrara Pistachio Silk



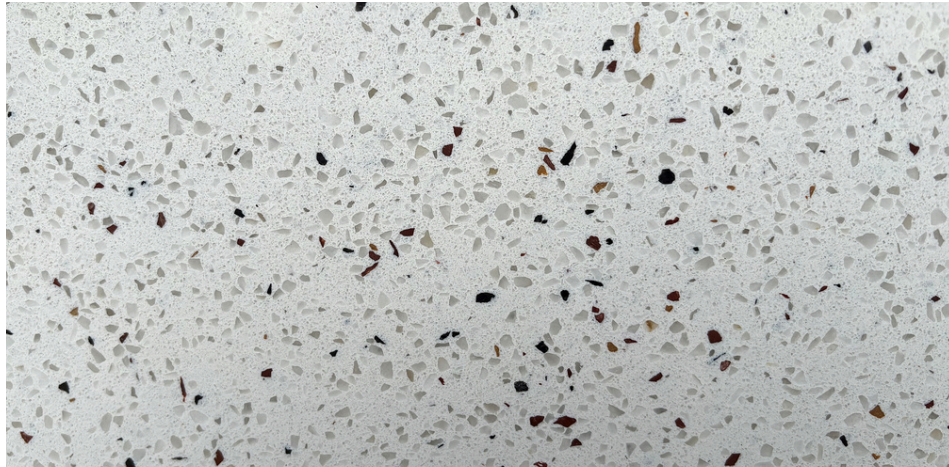
Carrara White



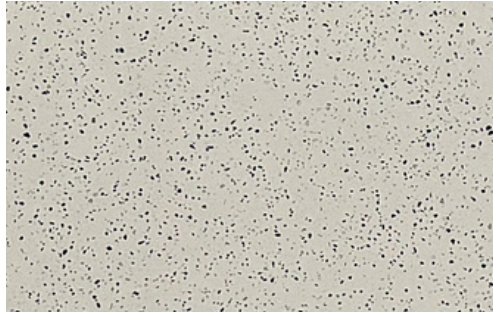
TERRAZZO COLLECTION



Terrazzo White Carnival



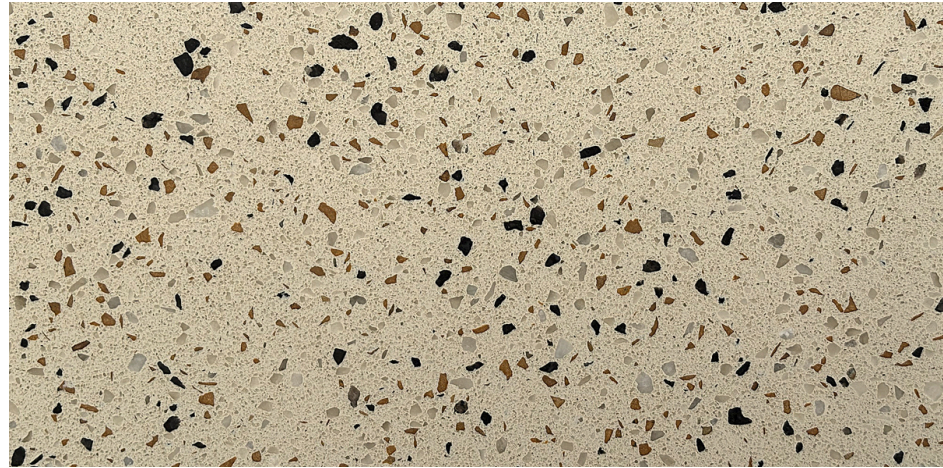
Terrazzo Polar Chip



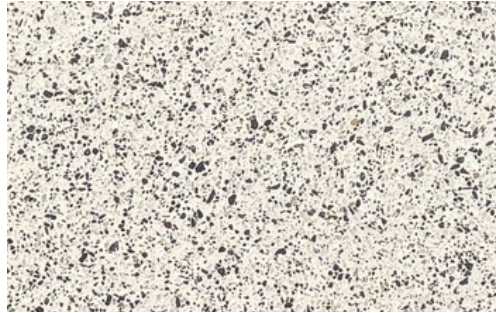
Terrazzo Urban Pepper



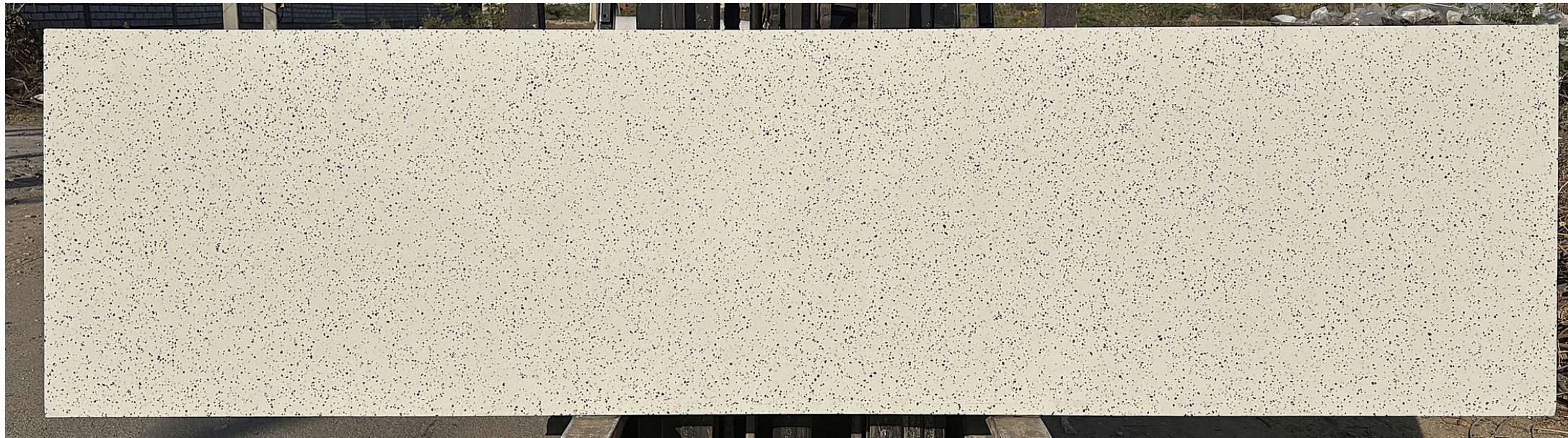
Terrazzo Sunset Chip



Terrazzo Urban White



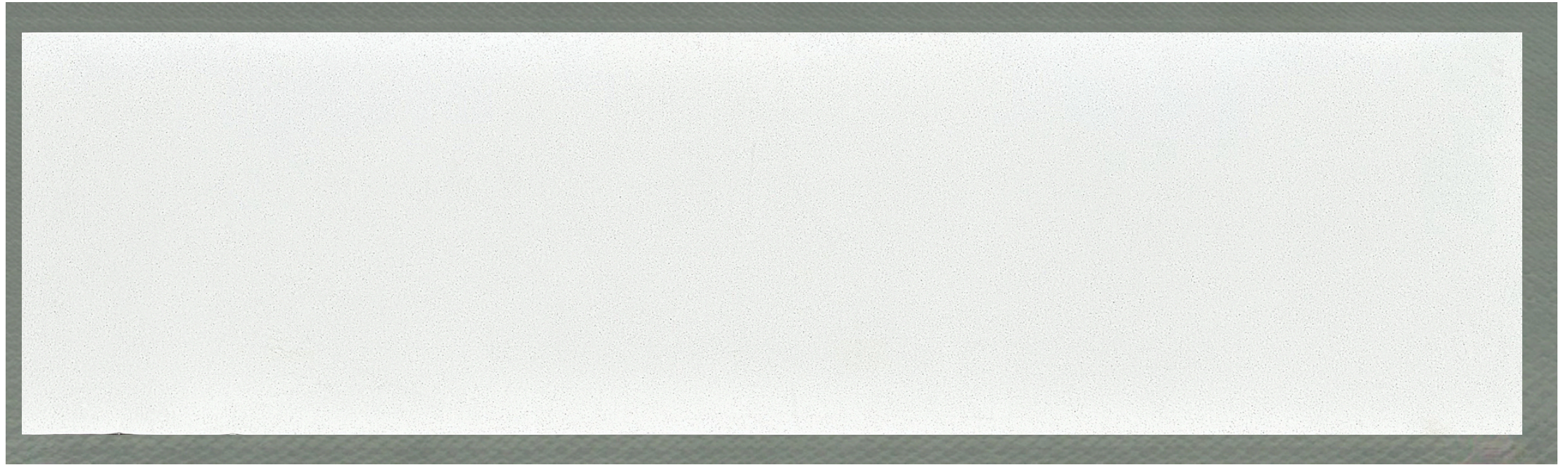
Terrazzo White



SOLID COLLECTION



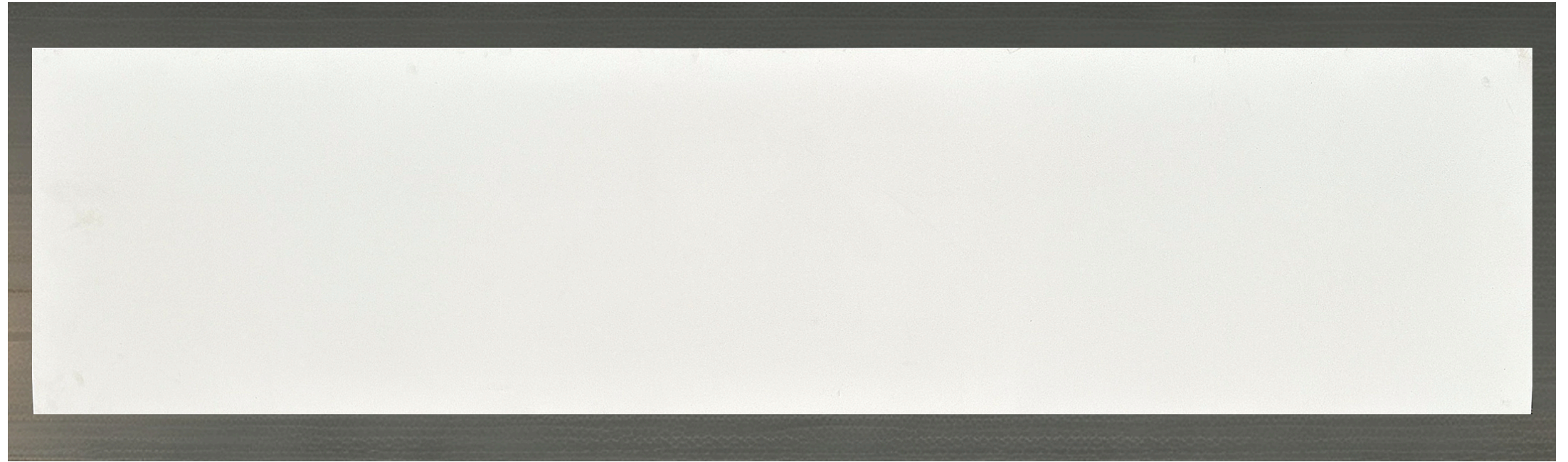
Frost White



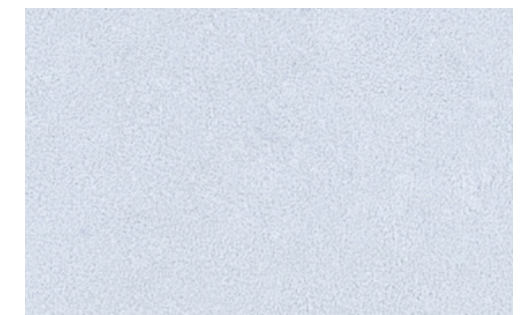
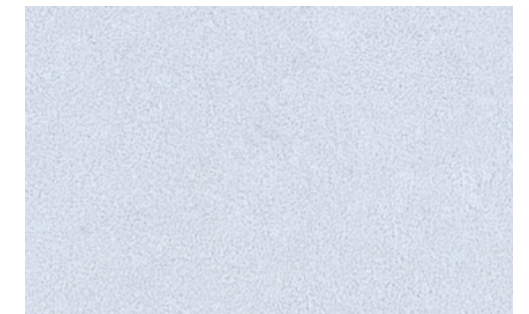
Pure White



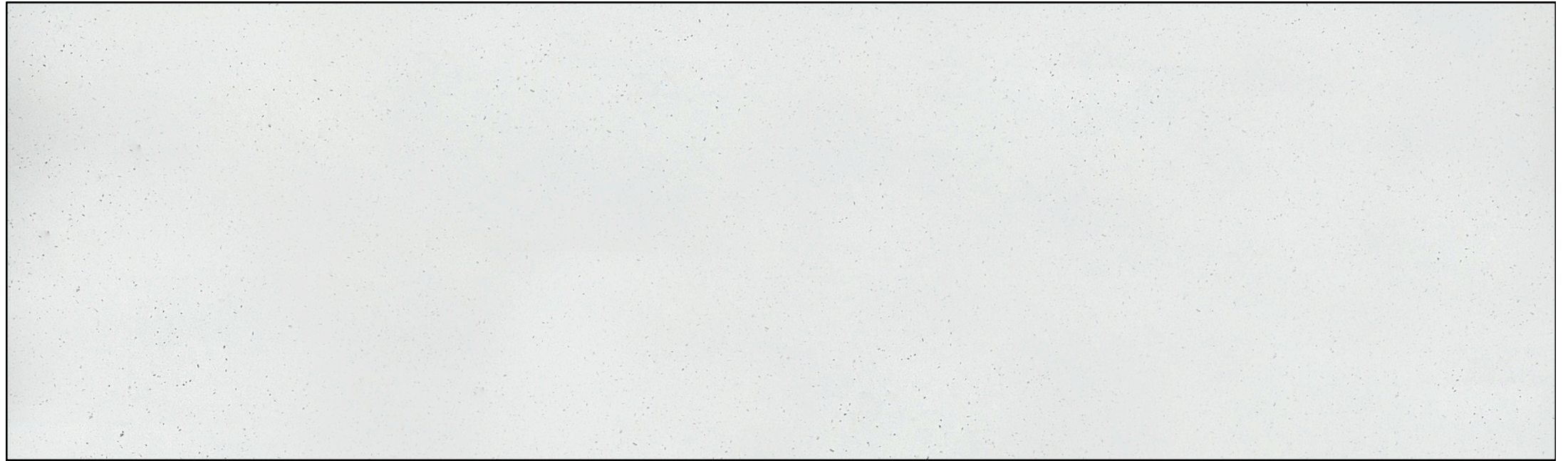
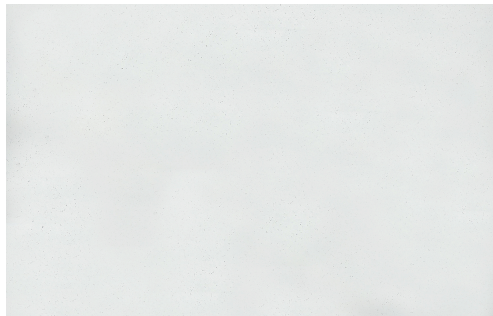
Snow White



Snow Light Grey



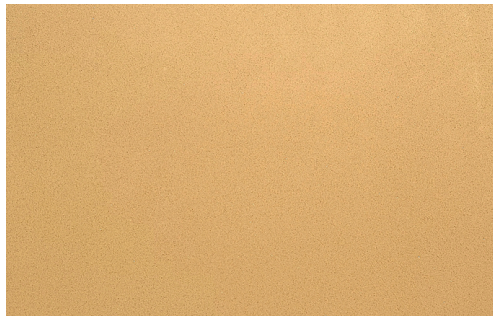
Shimmer White



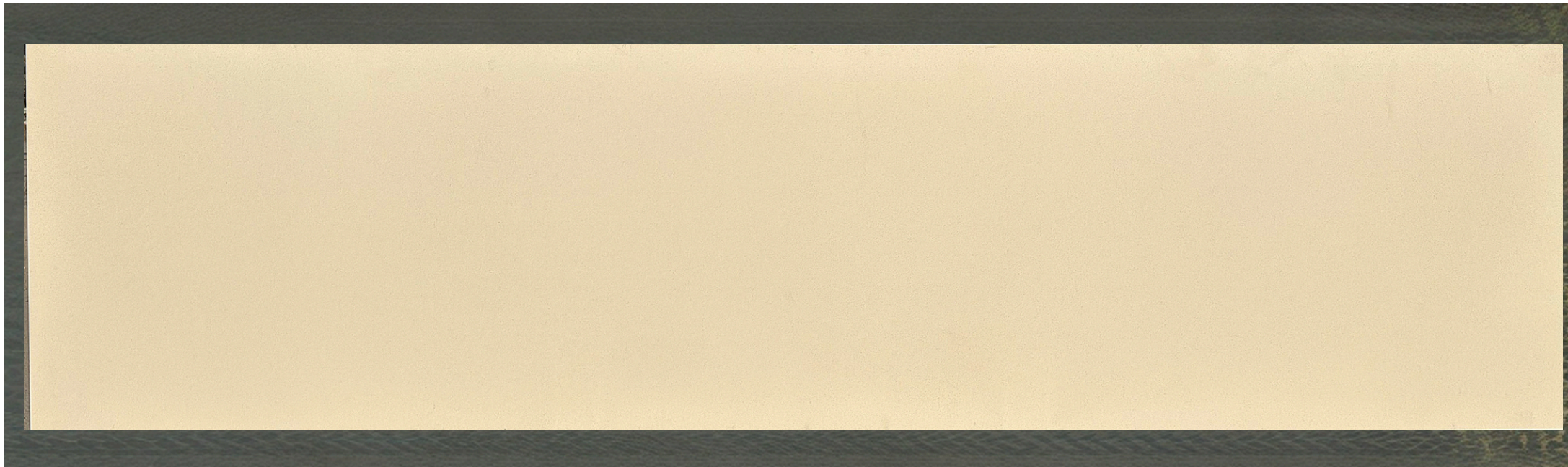
Snow Ice White



Snow Brown Cinnamon



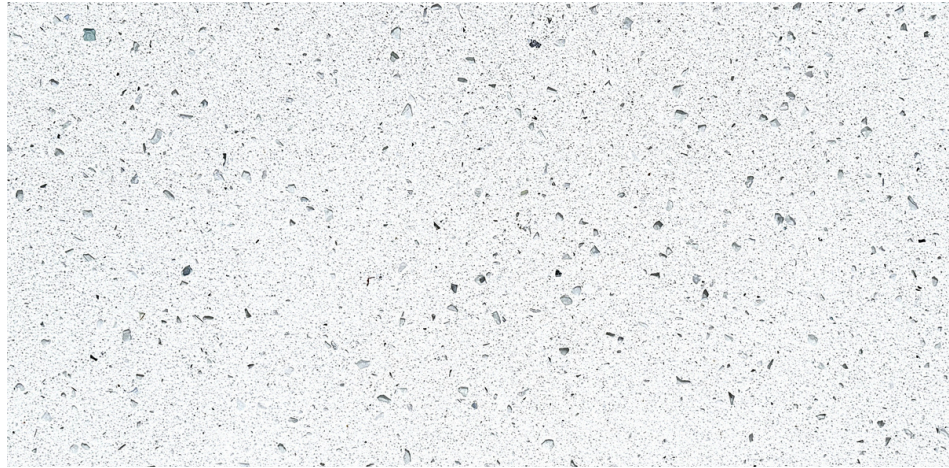
Snow Beige



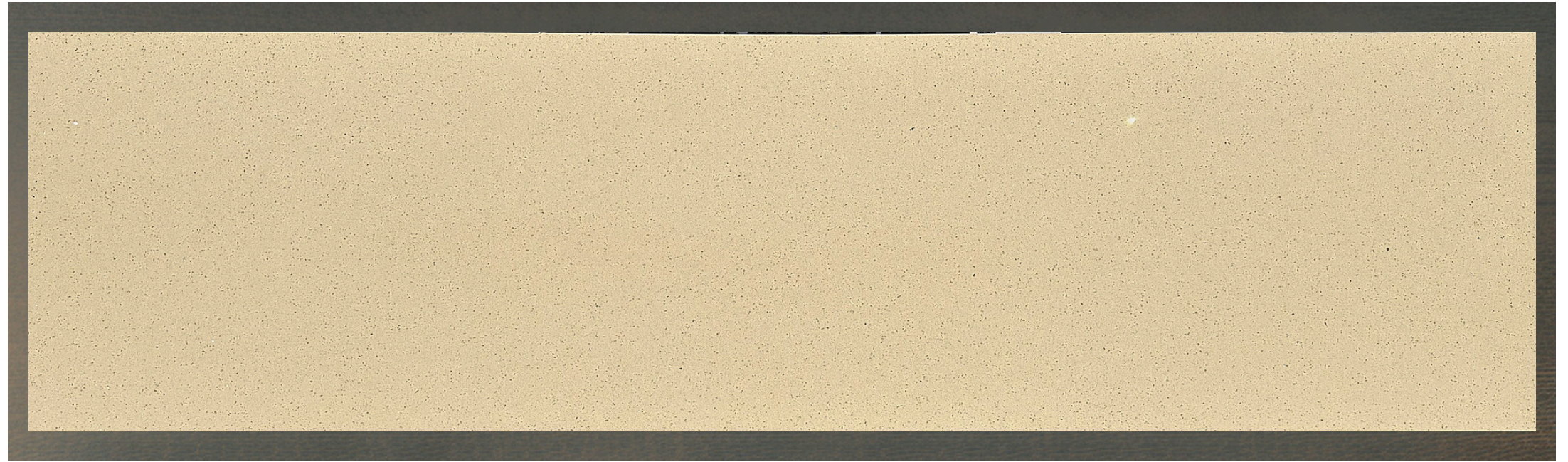
SPARKLE COLLECTION



Sparkle White



Sparkle Beige



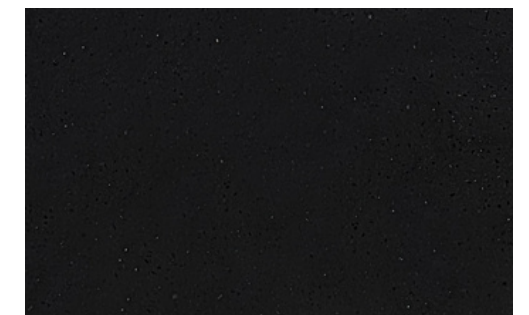
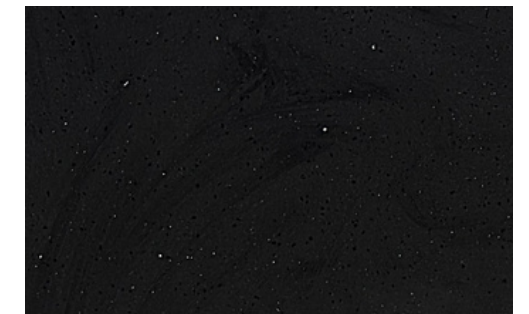
Sparkle Camel



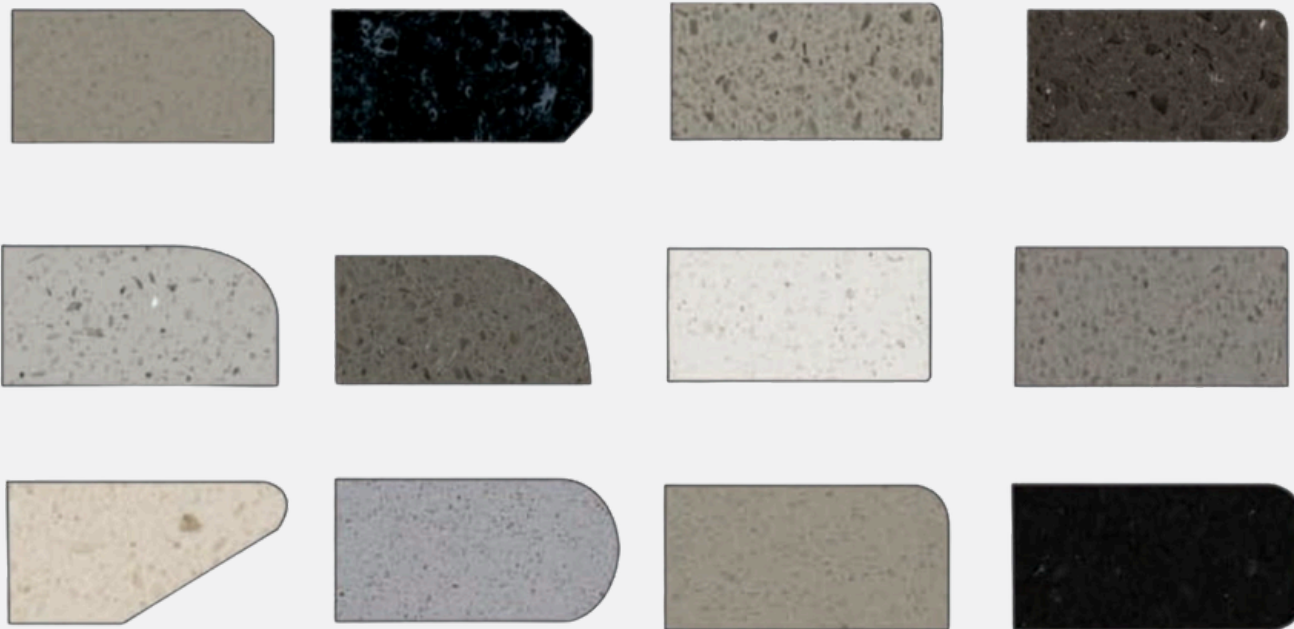
Sparkle Grey



Sparkle Black



EDGE PROFILES



USES

Residential

Kitchen Countertops | Islands | Peninsulas
Bathroom Vanities | Shower Areas

Commercial

Reception Desks | Conference Tables
Food Preparation Areas | Worktops

Architectural & Interior

Flooring | Wall Cladding | Inlays | Custom Designs

REACH US

Website: www.techstonequartz.com

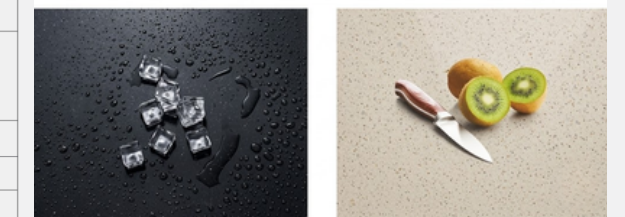
TECHNICAL SPECIFICATIONS

SPECIFICATIONS	TEST METHOD	RESULTS
Water Absorption	ASTM C97 / C97M-18	≤ 0.02 % ≤
	BS EN 14617-1:2005	0.02 %
Apparent Density	ASTM C97 / C97M-18	2.1 – 2.3g/cm ³
	BS EN 14617-1:2005	2.1 – 2.3g/cm ³
Flexural Strength	ASTM C880/C880M-18	Fine and medium grain: ≥ 55 MPa Coarse grain: ≥ 41 MPa
	BS EN 14617-2:2016	Fine and medium grain: > 60 MPa Coarse grain: > 40 MPa
Compressive Strength	ASTM C170/C170M-17	Dry: ≥ 200 MPa
	BS EN 14617-15:2005	Dry: ≥ 185 MPa
Chemical Resistance	ASTM C650-04:2014	Unaffected
	BS EN 14617-10:2012	Class C4
Dimension Stability	EN 14617-12:2012	Class A
Impact Resistance	ASTM C1870-18	36-inch ball drop: ≤ 0.25 in 48-inch ball drop: ≤ 0.27 in
	BS EN 14617-9:2005	> 4 J
Abrasion Resistance	ASTM C501-84:2015	Abrasive Wear index: I _w ≥ 179
	BS EN 14617-4:2012	Volume of chord: V ≤ 165 mm ³ Chord length: l ≤ 27 mm
Thermal Shock Resistance	ASTM C484-99:2014	No visible damage after 10 cycles
	EN 14617-6:2012	No Visible defects after 20 cycles Change in mass: ≤ 0.05% Change in flexural strength: - 8.4% + 5.4%
Freeze-thaw Resistance	ASTM C1026-13:2018	No visible damage after 300 cycles Wt.Loss: ≤ 0.09%
	EN 14617-5:2012	No obvious damage after 20 cycles KM ₂₅ = 93 + 105%
Mohs's Scratch Hardness	EN 101: 1991	≥ 6
Slip Resistance	DIN 51130:2014	R9 at Honed 400
	ASTM C1028-07	Static coefficient of friction - Dry: 0.7 + 0.8 (Polished/Honed finish) - Wet: 0.5 + 0.7 (Polished/Honed finish)
Microbial Resistance	ASTM D6329-98	Ranking 3: Resistant to Mold Growth
Stain Resistance	ASTM C 1378-04:2014	Class A (Polished finish)
Surface Burning	ASTM E84	Class A

MATERIALS COMPARISON

MATERIALS	QUARTZ	GRANITE	MARBLE	SOLID SURFACES
Scratch Resistance	★★★★	★★★★	★	★
Stain Resistance	★★★★	★★	★	★★★★
Chip and Crack Resistance	★★★★	★★	★	★★★★
Heat and Burn Resistance	★★	★★	★	★★
Resistance to Household Chemicals Acids and Solvents	★★★★	★★	★	★★★★
Low Maintenance	★★★★	★★	★	★
Non-absorbency and Non-porosity	★★★★	★★	★	★★★★
Mold and Mildew Resistance	★★★★	★★	★	★★
Flexural Strength	★★★★	★	★	★★
Color Consistency	★★★★	★	★	★★★★
Immunity to Freeze and Thaw	★★★★	★★★★	★	★

KEY	★★★★	Excellent
	★★	Good
	★	Fair



DISCLAIMER

Shade and graining of actual product may vary from printed sample. We recommend ordering a sample or viewing a full slab at a retail location, showroom or design center.

